



FD8166A-N

Ultra-mini Fixed Dome
Network Camera



2MP · 30 fps · Compact Design · 940nm IR · SNV ·
Smart Stream II · 3DNR · WDR Enhanced · Defog

VIVOTEK's FD8166A-N is an ultra-mini IR fixed dome network camera with a tiny diameter of only 90 mm. Due to its compact, intelligent design and affordable price, the FD8166A-N is an ideal indoor surveillance solution that suits a wide variety of applications such as retail, offices, boutiques and other public areas.

Equipped with a 2 megapixel Full HD sensor enabling viewing resolution of 1920x1080 at 30 fps, the FD8166A-N is capable of capturing high-definition images whether in high contrast or low light environments by deploying WDR Enhanced and SNV technology. When combined with VIVOTEK's Smart Stream II technology, the FD8166A-N can reduce both bandwidth and storage consumption by up to 50%* while retaining the same

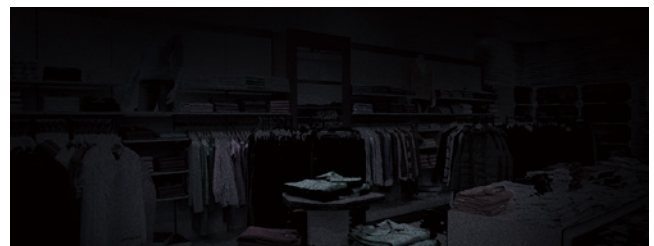
superb image quality as a Full HD camera. Further, armed with 940nm IR illumination, the FD8166A-N is able to see up to 6 meters in total darkness.

As an all-in-one camera, the FD8166A-N is designed for easy installation and equipped with Power over Ethernet (PoE) functionality, making setup both quick and simple. The FD8166A-N is also completely compatible with VIVOTEK's VAST free 32-channel recording software. With all of these benefits and more, the FD8166A-N is a sure bet to fulfill your surveillance needs.

* Depending on scene being monitored.

Key Features

- 2-Megapixel CMOS Sensor
- 30 fps @ 1920x1080
- Real-time H.264 and MJPEG Compression (Dual Codec)
- Built-in 940nm Invisible IR Illuminators up to 6 M
- SNV (Supreme Night Visibility) for Low Light Conditions
- Smart IR Technology to Avoid Overexposure
- Smart Stream II to Optimize Bandwidth Efficiency
- WDR Enhanced
- 3D Noise Reduction
- Defog
- Built-in IEEE 802.3af Compliant PoE
- Built-in MicroSD/SDHC/SDXC Card Slot for On-board Storage
- Compact and Stylish Design
- Easy Installation

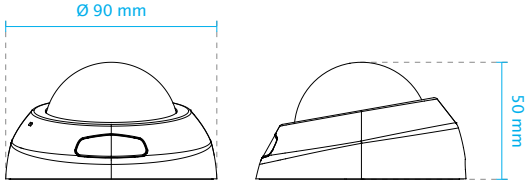


IR Off



IR On

Technical Specifications

Model	FD8166A-N	Interface	10 Base-T/100 BaseTX Ethernet (RJ-45) *It is highly recommended to use standard CAT5e & CAT6 cables which are compliant with the 3P/ETL standard.
System Information		ONVIF	Supported, specification available at www.onvif.org
CPU	Multimedia SoC (System-on-Chip)	Intelligent Video	
Flash	128MB	Video Motion Detection	Five-window video motion detection
RAM	256MB	VCA	Line crossing detection, field detection, loitering detection *Available per project request.
Camera Features		Alarm and Event	
Image Sensor	1/2.8" Progressive CMOS	Alarm Triggers	Motion detection, manual trigger, periodical trigger, system boot, recording notification, camera tampering detection, audio detection
Maximum Resolution	1920x1080 (2MP)	Alarm Events	Event notification using HTTP, SMTP, FTP, NAS server and SD Card File upload via HTTP, SMTP, FTP, NAS server and SD card
Lens Type	Fixed-focal	General	
Focal Length	f = 2.8 mm	Connectors	RJ-45 cable connector for 10/100Mbps Network/PoE connection
Aperture	F1.8	LED Indicator	System power and status indicator
Field of View	113° (Horizontal) 63° (Vertical) 136° (Diagonal)	Power Input	IEEE 802.3af PoE Class 2
Shutter Time	1/5 sec. to 1/32,000 sec.	Power Consumption	Max. 4.75 W
WDR Technology	WDR Enhanced	Dimensions	Ø 90 x 50 mm
Day/Night	Yes	Weight	145.8 g
Minimum Illumination	0.05 Lux @ F1.8 (Color) <0.001 Lux @ F1.8 (B/W), 0 Lux with IR illumination on	Safety Certifications	CE, LVD, FCC Class B, VCCI, C-Tick, UL
Pan Range	45°	Operating Temperature	Starting Temperature: 0°C ~ 50°C (32°F ~ 122°F) Working Temperature: -10°C ~ 50°C (14°F ~ 122°F)
Tilt Range	33° ~ 90°	Humidity	90%
Pan/Tilt/Zoom Functionalities	ePTZ: 48x digital zoom (4x on IE plug-in, 12x built-in)	Warranty	24 months
IR Illuminators	Built-in 940nm IR illuminators, effective up to 6 meters with Smart IR	System Requirements	
On-board Storage	Slot type: MicroSD/SDHC/SDXC card slot Seamless Recording	Operating System	Microsoft Windows 7/Vista/XP/2000
Video		Web Browser	Mozilla Firefox 7~43 (Streaming only) Internet Explorer 7/8/9/10/11
Compression	H.264 & MJPEG	Other Players	VLC: 1.1.11 or above Quicktime: 7 or above
Maximum Frame Rate	30 fps @ 1920x1080 In both compression modes	Included Accessories	
Maximum Streams	4 simultaneous streams	Others	Quick installation guide, warranty card, screws pack, focus kit
S/N Ratio	47dB	Dimensions	
Dynamic Range	70dB		
Video Streaming	Adjustable resolution, quality and constant bitrate control Smart Stream II		
Image Settings	Time stamp, text overlay, flip & mirror; Configurable brightness, contrast, saturation, sharpness, white balance, exposure control, gain, backlight compensation, privacy masks; Scheduled profile settings, 3D noise reduction, video rotation, defog		
Audio			
Audio Capability	One-way audio		
Compression	G.711, G.726		
Interface	Built-in microphone		
Effective Range	5 meters		
Network			
Users	Live viewing for up to 10 clients		
Protocols	IPv4, IPv6, TCP/IP, HTTP, HTTPS, UPnP, RTSP/RTP/RTCP, IGMP, SMTP, FTP, DHCP, NTP, DNS, DDNS, PPPoE, CoS, QoS, SNMP, 802.1X, UDP, ICMP, ARP, SSL, TLS		