



ND9441P ND9541P

H.265 16-CH/32-CH
Embedded Plug & Play NVR



H.265/H.264 · 16x PoE Port · 4x HDD · HDMI/VGA Local Display · PoE Management · RAID · Fisheye Dewarp · VIVOCLOUD · ONVIF · POS Integration

VIVOTEK's ND9441P and ND9541P are H.265 Linux-based standalone NVRs with embedded PoE. Equipped for up to 16-CH/32-CH network cameras, the NVRs both support 16x 802.3 at/af PoE ports which feature PoE Management function to help users troubleshoot the physical layer structure. Both also display the PoE power information, providing for a more convenient and smarter installation.

The ND9441P/ND9541P also supports remote and mobile access via VIVOCLOUD and iViewer apps for both iOS and Android handheld devices. The VIVOCLOUD app provides instant push notification and direct video playback functions when triggered by an alarm notification, providing users with a flexible and intelligent NVR for seamless use in small to medium sized video surveillance applications.

With H.265 compression technology and embedded with 4 HDD's providing up to 32TB, the ND9441P/ND9541P offers greater than 30% more recording capacity than H.264 systems. This advancement provides users with more storage space for longer durations of video recording. In addition, the RAID 0/1/5 configurations provide further data security in the rare event of a hard drive failure.

For high-quality and detailed images, the ND9441P/ND9541P supports a maximum network camera resolution of 12-Megapixels. To intelligently manage bandwidth while maintaining this high-quality, the "Auto Adaptive Stream" function will adjust the display resolution automatically for each different layout type. Furthermore, the NVR supports VIVOTEK's fisheye network camera "Fisheye Dewarp" function, which provides multiple de-warping modes in live view and playback, ensuring the correct angle of video view and detailed information for flexible usage. Lastly, to quickly and intuitively find any target event, the ND9441P/ND9541P is equipped with the "Story-Board Search" function, which provides a glimpse of past recordings over an intuitive timeline.

The ND9441P/ND9541P supports HDMI and VGA local video output, so users can control the GUI OSD interface via mouse & keyboard, eliminating the need for a separate PC to search video or playback from the NVR. Additionally, the intuitive and friendly VIVOTEK GUI design gives users a smoother control experience than ever before.

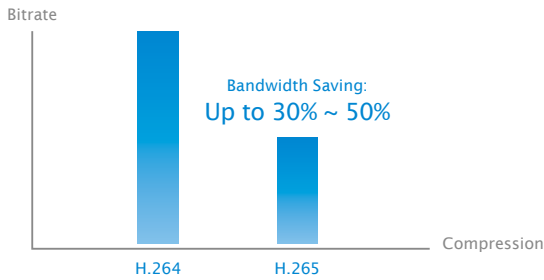
Key Features

- H.265/H.264 Compression Technology
- Plug & Play One Button Auto Setup
- VIVOCLOUD App & Portal for 24/7 Surveillance
- Support RAID 0/1/5 Storage
- VIVOTEK Camera Configuration and VAST CMS Integrated
- Live and Playback Fisheye Dewarp
- Embedded Linux OS
- Story Board Event Search
- Up to 12MP Camera Liveview & Playback
- PoE Management
- ONVIF Open Platform (Project Support Function)
- POS Integration (Project Support Function)
- Watermark

Highlight Features

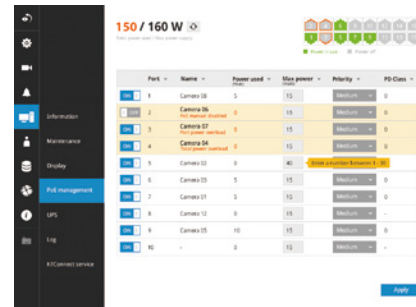
H.265 Compression Technology

To provide high-quality images and efficient video compression for today's surveillance applications, VIVOTEK presents these two NVRs. Endowed with H.265 technology, these NVRs offer more than 30% ~ 50% greater recording capacity than H.264 systems - effectively giving users larger storage capacity for longer durations of high-quality video recording.



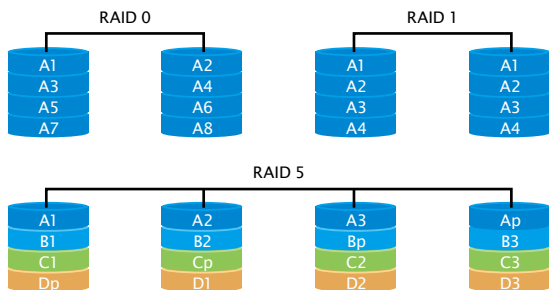
PoE Management

Both NVRs support 16 x 802.3at/af PoE ports which feature PoE management functions, allowing users to easily troubleshoot problems, control power budget for better operation, and set port priority settings to ensure the most important cameras are always on. When system power is overloaded, the PoE ports will auto-reboot for power supply recovery.



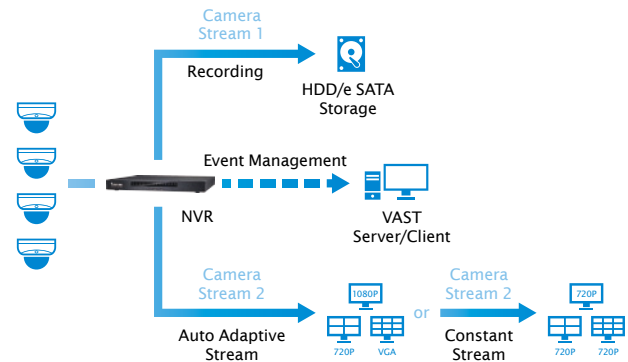
RAID

The RAID 0, 1, 5 configuration provides further data security and reliable video storage. (RAID Max. Volume: 16TB)



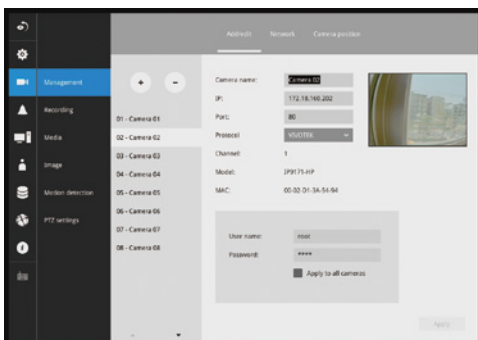
Auto/Constant Adaptive Stream

The resolution of a Camera's second Stream has two options according to the display layout selected: Auto-Adaptive Stream or Constant Stream. This increases the flexibility to reduce bandwidth and save on total project costs (auto-adaptive stream), or maintain superb video quality (constant stream).



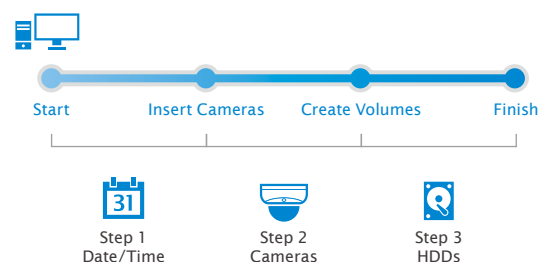
Intuitive UI

With a friendly and elegant interactive design, users can enjoy the benefit of simple operation and an UI that's easy on the eyes.



One Button Setup

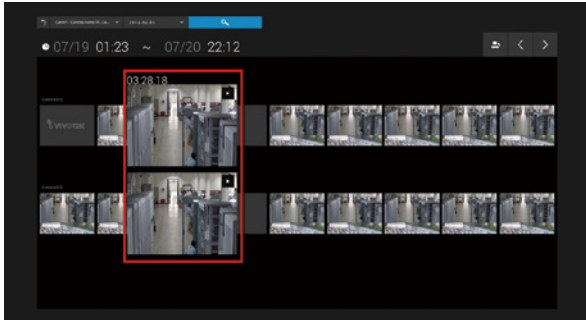
In order to provide users a highly intuitive experience, VIVOTEK's NVRs provide Auto-Wizard for convenient system set-up, which takes less than 2 minutes to finish it.



Highlight Features

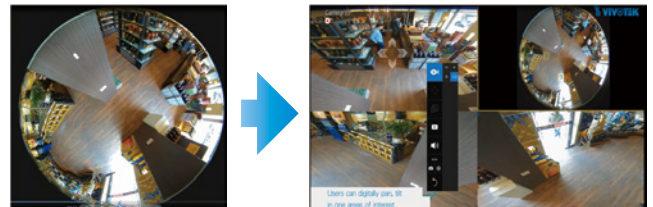
Story Board Event Search

To quickly and intuitively find any target event, we provide a glimpse of past recording over an intuitive timeline, allowing users to direct playback and archive their video within 10 seconds.



Fisheye Dewarp

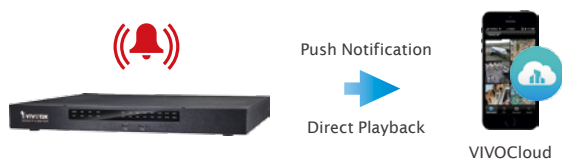
VIVOTEK's NVR offers both LiveView and Playback modes for one fisheye network camera simultaneously. They also provide multiple fisheye de-warp display modes, including 1O, 1P, 1R, 1O3R, 1O8R, allowing users to monitor any angle, or to enjoy precise detailed images for a total surveillance experience.



*Support LiveView and Playback modes

VIVOCLOUD - Push Notification

Enhanced event notification for 24/7 mobile surveillance. Once the NVR has an alarm notification, the VIVOCLOUD app will receive the push notification and users can directly playback the video immediately via Android/iOS devices.



VAST CMS Integration

VIVOTEK's NVR is both CMS compliant and a totally scalable configuration thanks to VAST CMS. This powerful tool enables users to set up and manage advanced IP surveillance systems with ease.



Applications

Rich Performance

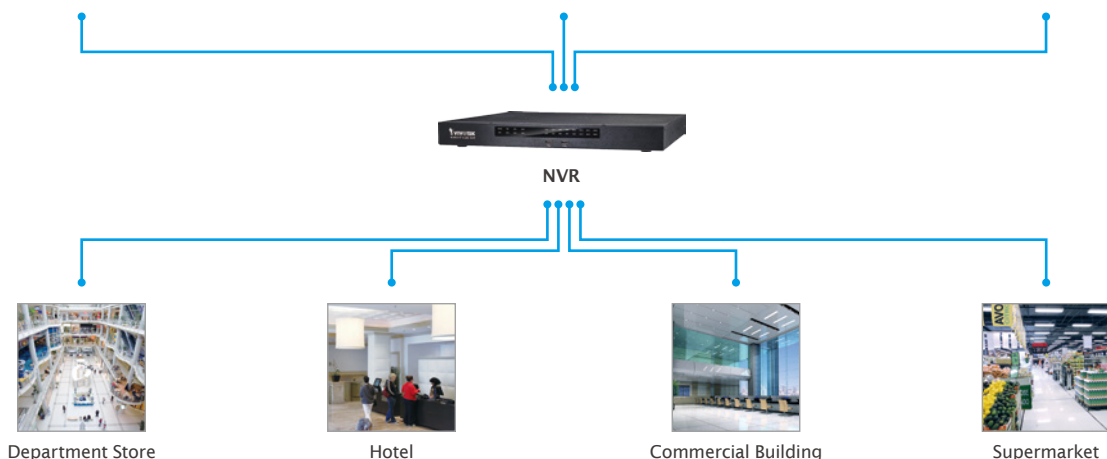
- H.265/H.264
- Fisheye Dewarp
- Story Board Search
- PoE Management

High Reliability

- 12M IP Cam Support
- 16 PoE
- RAID

Scalable Solution

- ONVIF
- VIVOCLOUD
- VAST CMS



Product - Order Information

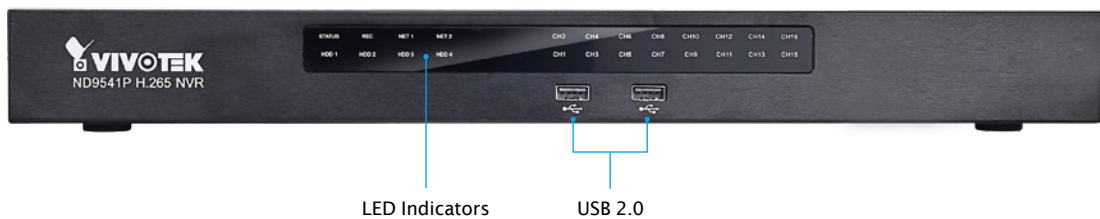
Model	Description	Part Number
ND9441P	H.265, 16CH, 16 PoE, 4HDD NVR	100150900G, US
		100150910G, EU
		100150920G, UK
		100150930G, AU
		100150800G, US
ND9541P	H.265, 32CH, 16 PoE, 4HDD NVR	100150810G, EU
		100150820G, UK
		100150830G, AU
		100150840G, AU

Accessory - Order Information

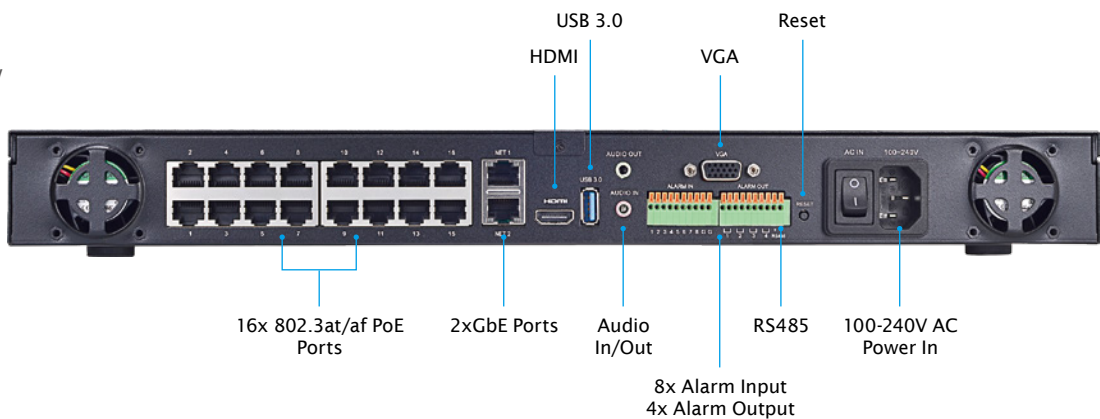
Model	Part Number
Surveillance HDD 1TB	900029300G
Surveillance HDD 2TB	900022500G
Surveillance HDD 3TB	900022400G
Surveillance HDD 4TB	900022300G
Surveillance HDD 6TB	900029100G
AM-612: Rack Mount Slide Rails	900030000G

Mechanical Information

Front View



Back View



Technical Specifications

Model	ND9441P H.265 16-CH Embedded Plug & Play NVR	ND9541P H.265 32-CH Embedded Plug & Play NVR
Hardware Information		
System		
OS	Embedded Linux	
CPU	ARM Processor	
Flash	256 MB	
RAM	2 GB	4 GB
Watchdog	Hardware + Software	
Power Restoration	System Restart Automatically after Power Recovery	
Storage		
HDD Devices	Internal x4	
HDD Max. Capacity	8 TB x4	
Disk Management	Create, Format and Remove Disk HDD S.M.A.R.T RAID 0, 1, 5 (RAID Max. Volume: 16TB)	
Video & Audio		
Video Output	HDMI x1, VGA x1	
Resolution	1920x1080, 1280x720	
Graphics Decoder	Hardware decoding	
Decoding Capacity	H.265/H.264: 2560x1920 @ 30 fps (1-CH) 1920x1080 @ 120 fps (4-CH) 1280x720 @ 240 fps (8-CH) 1280x720 @ 480 fps (16-CH)	H.265/H.264: 2560x1920 @ 30 fps (1-CH) 1920x1080 @ 120 fps (4-CH) 1280x720 @ 240 fps (8-CH) 1280x720 @ 480 fps (16-CH) 720x480 @ 960 fps (32-CH)
Camera Position	Change the viewcell position on the Live View screens	
External Interface		
USB Interface	Front: 2 (USB 2.0) Back: 1 (USB 3.0)	
Alarm In	8	
Alarm Out	4	
Audio	3.5 Phone Jack Audio Output x1 3.5 Phone Jack Audio Input (Reserved) x1	
External HDD	USB 3.0 Port x 1	
RS485	1 Port (Reserved)	
Network		
Network Interface	10/100/1000Mbps Ethernet (RJ-45) x 2	
PoE	16x 802.3at/af Compliant PoE Ports (Total Max. 160W)	
Protocols	IPv4, TCP/IP, HTTP, HTTPS, UPnP, RTSP/RTP/RTCP, SMTP, FTP, DHCP, NTP, DNS, DDNS, IP Filter	
Power		
Power Input	100-240V AC, 50/60Hz	
Power Consumption	Max. 260 W	
LED Indicator		
LED Indicator	Status, Record, HDD1, HDD2, HDD3, HDD4, Net1, Net2, CH1 ~ CH16	
Mechanic		
Form Factor	Desktop	
Operation Buttons	Reset (Back)	
Dimensions	430 (W) x 400 (D) x 44.5 (H) mm	
Weight	4.5 kg (without HDD)	
Operating Temperature	0°C ~ 40°C (32°F ~ 104°F)	
Humidity	0 ~ 95%	
General		
Safety Certifications	CE, LVD, FCC, VCCI, C-Tick, UL	
Warranty	24 months	
Client PC Requirements		
Operating System	Microsoft Windows OS: XP/Vista/7/8/10/2008/2012	
CPU	Intel Celeron or above	
Memory	2 GB or above	

Technical Specifications

Model	ND9441P H.265 16-CH Embedded Plug & Play NVR	ND9541P H.265 32-CH Embedded Plug & Play NVR
Ethernet	10/100Mbps	
Display Resolution	1024x768 pixels or above	
Web Browser	Internet Explorer 10 (32 bit) or above	
Software AP	Installation Wizard 2, Shepherd, VAST , VAST 2	
Mobile/Tablet App	VIVOCloud (iOS/Android), iViewer (iOS/Android)	
Accessories		
CD	User's Manual, Quick Installation Guide, Installation Wizard 2	
Others	Power Cord, Quick Installation Guide, 32x H.D.D. Screws, 8x H.D.D. Brackets, 1x USB Mouse, 4x SATA Cables	
Software Information		
Record		
Maximum Channel	16	32
Record Throughput (MB)	192 Mbps	
Network Throughput (MB)	96 Mbps	
Audio Format	G.711, G.726	
Video Format	H.265, H.264, MJPEG	
Video Resolution	Up to 12MP Camera	
Recording Time (sec.)	Pre-Record: 5 (Max. 10) Post-Record: 20 (Max. 300)	
Recording Stream	Single	
Recording Mode	Continuous, Schedule, Manual, Event, Activity Adaptive Streaming	
Recording Setting	Recycle (unit: Day)	
Recording Path	Local Path	
Record Video Format	3GP	
Watermark	Supported	
LiveView (Local Display)		
Stream Application	Constant/Auto Adaptive Stream	
LiveView Display	16 Channels Multiple Layout Display: 1x1, 2x2, 3x3, 1P+3, 2P+3, 1M+5, 1P+6, 3V, 1M+12, 4x4	32 Channels Multiple Layout Display: 1x1, 2x2, 3x3, 1P+3, 2P+3, 1M+5, 1P+6, 3V, 1M+12, 4x4, 1M+31
Monitor Enhancement	OSD Display (NVR), OSD Display (Camera), Camera Information, Remote I/O Control, Event Notification, Aspect Ratio, Fisheye Dewarp (10, 1P, 1R, 1O3R, 1O8R)	
PTZ Control	Panel Control/Joystick	
PTZ Operation	Direction Control, Home, Iris, Preset, Patrol (Group), PiP Control	
Playback (Local Display)		
Playback Display	4 Channels Multiple Layout Display: 1x1, 2x2, 1P+3, 1V+3	
Playback Control	Regular (Play, Pause, Stop), Rewind, Next/Previous Frame, Speed Control, Calendar, Event, Timeline, Timeline Scale, Thumbnail (Storyboard)	
Video Search	By Calendar, Date/Time, Alarm	
Thumbnail Explorer (Storyboard)	Listing the thumbnail of recorded video (Max. 2 CH)	
Monitor Enhancement	OSD Display (Camera), Event Notification, Aspect Ratio, PiP Control, Fisheye Dewarp (10, 1P, 1R, 1O3R, 1O8R)	
Snapshot	JPEG	
Video Clip Export	EXE	
LiveView (Remote)		
Stream Application	Stream Selection	
Audio Capability	One Way	
LiveView Display	16 Channels Multiple Layout Display: 1x1, 2x2, 3x3, 4x4, 1V+3, 1M+5, 1M+12	32 Channels Multiple Layout Display: 1x1, 2x2, 3x3, 4x4, 1V+3, 1M+5, 1M+12, 1M+31
Monitor Enhancement	OSD Display (NVR), Drag & Drop, Image Freeze, Audio Control, Remote I/O Control, Event Notification, Bookmark, Fisheye Dewarp (10, 1P, 1R)	
PTZ Control	Panel Control	
PTZ Operation	Direction Control, Home, Zoom, Focus, Iris, Preset, Patrol (Group), PiP Control	
Snapshot	JPEG	
Playback (Remote)		

Technical Specifications

Model	ND9441P H.265 16-CH Embedded Plug & Play NVR	ND9541P H.265 32-CH Embedded Plug & Play NVR
Playback Display	4 Channels Multiple Layout Display: 1x1, 2x2, 1V+3	
Playback Control	Regular (Play, Pause, Stop), Next Frame, Speed Control, Calendar, Timeline, Timeline Scale, Bookmark	
Monitor Enhancement	OSD Display (NVR), Drag & Drop, Audio Control, PIP Control, Fisheye Dewarp (10, 1P, 1R)	
Snapshot	JPEG	
Video Clip Export	EXE	
Alarm Management		
Schedule Type	Continuous, Schedule, Manual	
Event	Motion Detection, PIR Detection, Tampering Detection, Digital Input (Camera), Digital Output (Camera), Connection Abnormal, Storage Abnormal, Storage Full, Camera Network Loss, DI, DO	
Action	Record, Email (Text), Email (Snapshot), FTP, Buzzer, ePTZ Control (Go to Preset), NVR DO, Camera DO, VIVOCLOUD APP Notification	
Recording Time (sec.)	Pre-Record: 5 (Max. 10), Post-Record: 20 (Max. 300)	
Backup		
Manual	USB Dongle (FAT Format)	
System		
User Management	User Account: 16 User Account Time Limit: 10 mins User Level: Administrator, Regular User User Feature Definition: By Camera	
Log	System, Recording, User, Error	
Date&Time	Time Zone, Manual, Automatic Sync NTP, Daylight Saving Time	
Firmware	Manual update	
Restore Default	Supported	
Backup/Restore (Configuration)	Supported	
Language	Czech, English, French, German, Italian, Japanese, Korean, Polish, Portuguese, Russian, Spanish, Simplified Chinese, Traditional Chinese	
Camera Intergration		
Insert Camera	Manual, Search	
Video (Media) Setting	Compression, Resolution, FPS, Video Quality	
Image Setting	Image Display, Image Adjustment	
PTZ Control	Panel Control, Joystick	
PTZ Operation	Direction Control, Home, Preset, Patrol (Group)	
Motion Detection	Supported	
ONVIF Core Spec	Version 2.2 or above (By Project)	
ONVIF Stream	Video(H.264 & MJPEG)	
ONVIF Recording	Continuous, Schedule, Manual	
ONVIF Discover	Discover the other brand camera through "Insert Camera & Batch Insert"	
Device Intergration		
UPS	APC Model Compatible	
Joystick	IPD-USB, AJ001	
Dimensions		

